

Weekly Stock Trade Watchlist + Market Notes for the Week 1/22/2024 to 1/26/2024

COIN - Current Price - \$122.11 - Had a nice reversal on Friday after bouncing off daily rally-base-rally demand zone.



***Chart created by Ryan Miscik on the Trading View platform on 1/22/2024. The performance data shown represents past performance and does not guarantee future results.

67 East Park Place, Suite 750 | Morristown, NJ | 07960
www.greenbergandrapp.com | o: 973-434-8076 | e: rmiscik@eaglerockwealth.com

Securities and Investment Advisory Services Offered Through M Holdings Securities, Inc. A Registered Broker/Dealer and Investment Adviser, Member FINRA/SIPC.
Greenberg & Rapp Financial Group, Inc. and Eagle Rock Wealth Management, Inc. are both independently owned and operated.

Weekly Stock Trade Watchlist + Market Notes for the Week 1/22/2024 to 1/26/2024

AFRM - Current Price - \$43.51 - Bounced off rally-base-rally demand zone and breaking down trend.



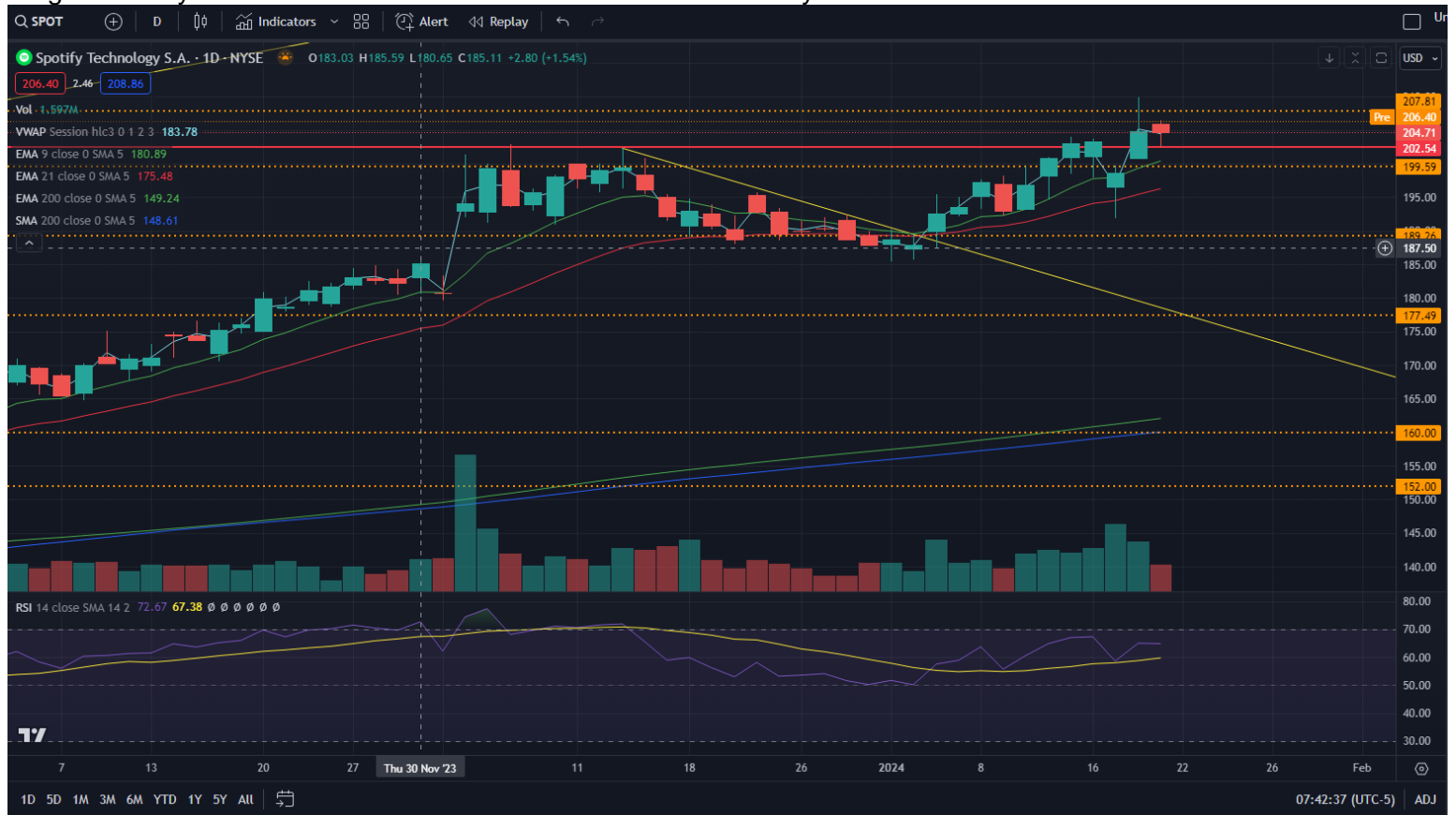
***Chart created by Ryan Miscik on the Trading View platform on 1/22/2024. The performance data shown represents past performance and does not guarantee future results.

67 East Park Place, Suite 750 | Morristown, NJ | 07960
www.greenbergandrapp.com | o: 973-434-8076 | e: rmiscik@eaglerockwealth.com

Securities and Investment Advisory Services Offered Through M Holdings Securities, Inc. A Registered Broker/Dealer and Investment Adviser, Member FINRA/SIPC.
Greenberg & Rapp Financial Group, Inc. and Eagle Rock Wealth Management, Inc. are both independently owned and operated.

Weekly Stock Trade Watchlist + Market Notes for the Week 1/22/2024 to 1/26/2024

SPOT - Current price - \$206.40 - Broke out of the range it was consolidating in last week and then retested the top of the range on friday and bounced to form a bullish hammer on the daily.



***Chart created by Ryan Miscik on the Trading View platform on 1/22/2024. The performance data shown represents past performance and does not guarantee future results.

67 East Park Place, Suite 750 | Morristown, NJ | 07960
www.greenbergandrapp.com | o: 973-434-8076 | e: rmiscik@eaglerockwealth.com

Securities and Investment Advisory Services Offered Through M Holdings Securities, Inc. A Registered Broker/Dealer and Investment Adviser, Member FINRA/SIPC.
Greenberg & Rapp Financial Group, Inc. and Eagle Rock Wealth Management, Inc. are both independently owned and operated.

Weekly Stock Trade Watchlist + Market Notes for the Week 1/22/2024 to 1/26/2024

SHOP - Current price - \$81.15 - bull flagging on the daily chart and breaking the flag to the upside.



***Chart created by Ryan Miscik on the Trading View platform on 1/22/2024. The performance data shown represents past performance and does not guarantee future results.

67 East Park Place, Suite 750 | Morristown, NJ | 07960
www.greenbergandrapp.com | o: 973-434-8076 | e: rmiscik@eaglerockwealth.com

Securities and Investment Advisory Services Offered Through M Holdings Securities, Inc. A Registered Broker/Dealer and Investment Adviser, Member FINRA/SIPC.
Greenberg & Rapp Financial Group, Inc. and Eagle Rock Wealth Management, Inc. are both independently owned and operated.

Weekly Stock Trade Watchlist + Market Notes for the Week 1/22/2024 to 1/26/2024

ADBE - Current Price - \$617.07 - Inverse head and shoulders on the daily and bounced off previous resistance which is now acting as support.



***Chart created by Ryan Miscik on the Trading View platform on 1/22/2024. The performance data shown represents past performance and does not guarantee future results.

67 East Park Place, Suite 750 | Morristown, NJ | 07960
www.greenbergandrapp.com | o: 973-434-8076 | e: rmiscik@eaglerockwealth.com

Securities and Investment Advisory Services Offered Through M Holdings Securities, Inc. A Registered Broker/Dealer and Investment Adviser, Member FINRA/SIPC.
Greenberg & Rapp Financial Group, Inc. and Eagle Rock Wealth Management, Inc. are both independently owned and operated.

Weekly Stock Trade Watchlist + Market Notes for the Week 1/22/2024 to 1/26/2024

Eco data this week:

Economic Releases		All Economic Releases		View <input type="radio"/> Agenda <input checked="" type="radio"/> Weekly <input type="radio"/>						
Date	Time	A	M	R	Event	Period	Surv(M)	Actual	Prior	Revised
21)	01/22 10:00				Leading Index	Dec	-0.3%	--	-0.5%	--
22)	01/23 08:30				Philadelphia Fed Non-Manufacturing Activity	Jan	--	--	6.3	--
23)	01/23 10:00				Richmond Fed Manufact. Index	Jan	-6	--	-11	--
24)	01/23 10:00				Richmond Fed Business Conditions	Jan	--	--	0	--
25)	01/24 07:00				MBA Mortgage Applications	Jan 19	--	--	10.4%	--
26)	01/24 09:45				S&P Global US Manufacturing PMI	Jan P	47.5	--	47.9	--
27)	01/24 09:45				S&P Global US Services PMI	Jan P	51.0	--	51.4	--
28)	01/24 09:45				S&P Global US Composite PMI	Jan P	51.0	--	50.9	--
29)	01/25 08:30				Chicago Fed Nat Activity Index	Dec	--	--	0.03	--
30)	01/25 08:30				GDP Annualized QoQ	4Q A	2.0%	--	4.9%	--
31)	01/25 08:30				Personal Consumption	4Q A	2.5%	--	3.1%	--
32)	01/25 08:30				GDP Price Index	4Q A	2.3%	--	3.3%	--
33)	01/25 08:30				Core PCE Price Index QoQ	4Q A	2.0%	--	2.0%	--
34)	01/25 08:30				Advance Goods Trade Balance	Dec	-\$88.5b	--	-\$90.3b	-\$89.3b
35)	01/25 08:30				Retail Inventories MoM	Dec	0.3%	--	-0.1%	--
36)	01/25 08:30				Wholesale Inventories MoM	Dec P	-0.2%	--	-0.2%	--
37)	01/25 08:30				Durable Goods Orders	Dec P	1.1%	--	5.4%	--
38)	01/25 08:30				Durables Ex Transportation	Dec P	0.2%	--	0.4%	--
39)	01/25 08:30				Cap Goods Orders Nondef Ex Air	Dec P	0.2%	--	0.8%	--
40)	01/25 08:30				Cap Goods Ship Nondef Ex Air	Dec P	0.2%	--	-0.2%	--
41)	01/25 08:30				Initial Jobless Claims	Jan 20	200k	--	187k	--
42)	01/25 08:30				Continuing Claims	Jan 13	1840k	--	1806k	--
43)	01/25 10:00				New Home Sales MoM	Dec	10.0%	--	-12.2%	--
44)	01/25 10:00				New Home Sales	Dec	649k	--	590k	--
45)	01/25 11:00				Kansas City Fed Manf. Activity	Jan	--	--	-1	--
46)	01/26 08:30				Personal Income	Dec	0.3%	--	0.4%	--
47)	01/26 08:30				Personal Spending	Dec	0.4%	--	0.2%	--
48)	01/26 08:30				Real Personal Spending	Dec	0.3%	--	0.3%	--
49)	01/26 08:30				PCE Deflator MoM	Dec	0.2%	--	-0.1%	--
50)	01/26 08:30				PCE Deflator YoY	Dec	2.6%	--	2.6%	--
51)	01/26 08:30				PCE Core Deflator MoM	Dec	0.2%	--	0.1%	--
52)	01/26 08:30				PCE Core Deflator YoY	Dec	3.0%	--	3.2%	--
53)	01/26 09:00				Bloomberg Jan. United States Economic Survey					
54)	01/26 10:00				Pending Home Sales MoM	Dec	2.0%	--	0.0%	--
55)	01/26 10:00				Pending Home Sales NSA YoY	Dec	--	--	-5.1%	--
56)	01/26 11:00				Kansas City Fed Services Activity	Jan	--	--	-10	--
57)	01/29 09:30				Dallas Fed Manf. Activity	Jan	--	--	-9.3	--

***Source Bloomberg

67 East Park Place, Suite 750 | Morristown, NJ | 07960
 www.greenbergandrapp.com | o: 973-434-8076 | e: rmiscik@eaglerockwealth.com

Securities and Investment Advisory Services Offered Through M Holdings Securities, Inc. A Registered Broker/Dealer and Investment Adviser, Member FINRA/SIPC.
 Greenberg & Rapp Financial Group, Inc. and Eagle Rock Wealth Management, Inc. are both independently owned and operated.

Weekly Stock Trade Watchlist + Market Notes for the Week 1/22/2024 to 1/26/2024

Other items of note this week:

Below is a list of the most notable earnings reports this week:

Monday		Tuesday		Wednesday		Thursday		Friday
Before Open	After Close	Before Open	After Close	Before Open	After Close	Before Open	After Close	Before Open

***Source earningswhispers.com

67 East Park Place, Suite 750 | Morristown, NJ | 07960
www.greenbergandrapp.com | o: 973-434-8076 | e: rmiscik@eaglerockwealth.com

This report was prepared by Greenberg & Rapp, and reflects the current opinion of the firm, which may change without further notice. This report is for informational purposes only and is not intended to replace the advice of a qualified professional. Nothing contained herein should be considered as investment advice or a recommendation or solicitation for the purchase or sale of any security or other investment. Opinions contained herein should not be interpreted as a forecast of future events or a guarantee of future results. Different types of investments involve varying degrees of risk, and there can be no assurance that any specific investment will either be suitable or profitable for a client's portfolio. Economic factors, market conditions, and investment strategies will affect the performance of any portfolio and there are no assurances that it will match or outperform any particular benchmark.

Investors cannot invest directly in an index.

Diversification does not ensure a profit or protect against loss in a declining market.

Commentary regarding the returns for investment indices and categories do not reflect the performance of Greenberg & Rapp, or its clients. Historical performance results for investment indices and/or categories generally do not reflect the deduction of transaction and/or custodial charges or the deduction of an investment-management fee, the incurrence of which would have the effect of decreasing historical performance results. Figures contained herein are obtained from sources deemed reliable, but we do not guarantee its accuracy or completeness. Past performance is no guarantee of future results. Investments fluctuate in value.